



BEAUFORT GREEN

# Stephendale Road, SW6

£650,000



A two-bedroom garden flat located in the heart of Sands End.

The property comprises two spacious double bedrooms, a modern bathroom, and a well-appointed kitchen. To the rear, a bright and airy reception room opens directly onto a private garden through impressive floor-to-ceiling bi-fold doors, flooding the space with natural light throughout the day.

Finished to a high standard throughout, the flat features quality flooring, a contemporary bathroom, and stylish kitchen fittings complete with modern appliances.





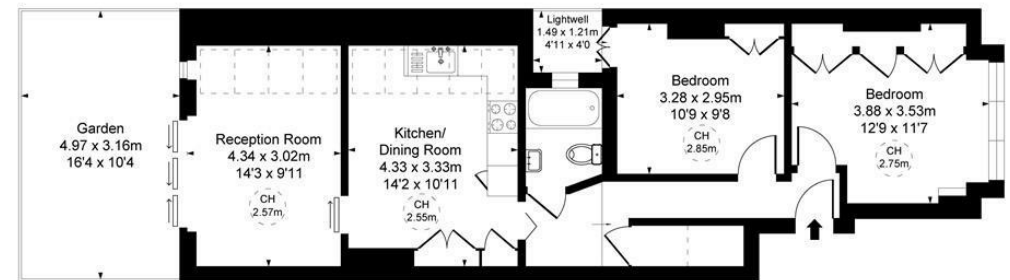
# BEAUFORT GREEN



# BEAUFORT GREEN

Stephendale Road, SW6

Approximate Gross Internal Area  
63.85 sq m / 687 sq ft  
(CH = Ceiling Heights)



Ground Floor

This plan is not to scale. It is for guidance and not for valuation purposes.  
All measurements and areas are approximate only, and have been prepared in accordance with the current edition of the RICS Code of Measuring Practice.

## At a Glance.

- Two Double Bedrooms
- Ground Floor Garden Flat
- Heart of Sands End
- Share of Freehold
- Period Conversion
- Private Outdoor Space

# BEAUFORT GREEN

02074594100

[charlie@beaufortgreen.co.uk](mailto:charlie@beaufortgreen.co.uk)

---

263 New Kings Road  
London  
SW16 1DB